



GAT MONTHLY MEMBERSHIP PROGRESS REPORT

Results as of: 3/31/2022

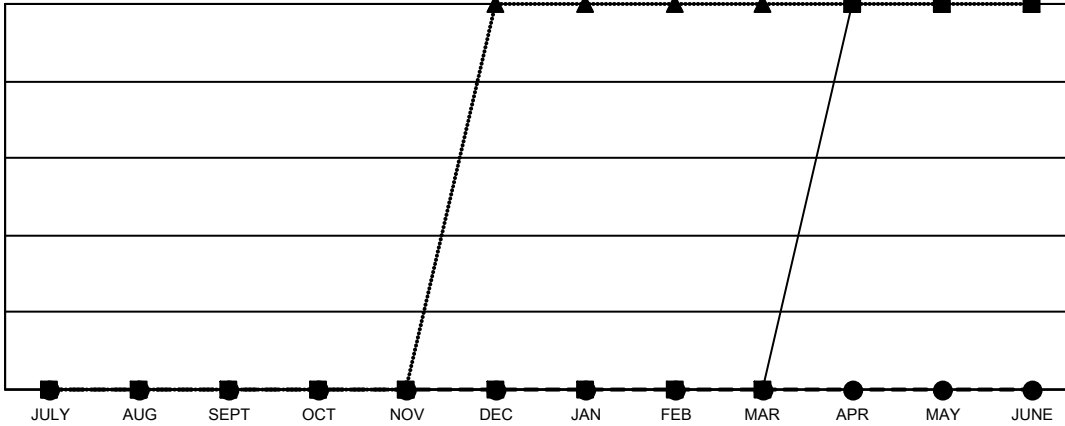
Multiple District 39

LOCATION: IDAHO

Clubs			
RESULTS FOR 2021-2022			
QUARTER	NEW CLUB GOAL	NEW CLUBS	DROPPED CLUBS
JULY/AUG/SEPT	0	0	1
OCT/NOV/DEC	0	0	0
JAN/FEB/MAR	0	0	1
APR/MAY/JUNE	1	0	0

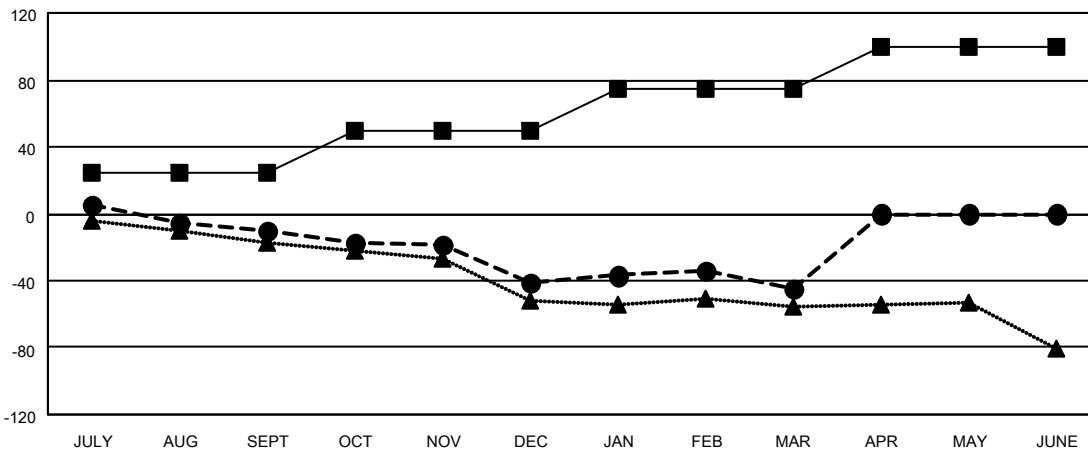
Members			
RESULTS FOR 2021-2022			
QUARTER	MEMBER GROWTH NET GOAL	MEMBER GROWTH ACTUAL	DROPPED MEMBERS ACTUAL (including transfers)
JULY/AUG/SEPT	25	36	45
OCT/NOV/DEC	25	28	58
JAN/FEB/MAR	25	42	45
APR/MAY/JUNE	25	0	0

GOALS AND ACTUAL NEW CLUBS CUMULATIVE



- CURRENT YEAR GOALS FOR NEW CLUBS
- CURRENT YEAR ACTUAL NEW CLUBS
- ▲- LAST YEAR ACTUAL NEW CLUBS

GOALS AND ACTUAL MEMBERS CUMULATIVE



- MEMBER GROWTH NET GOAL
- MEMBER GROWTH ACTUAL
- ▲- LAST YEAR MEMBERSHIP ACTUAL

DROPPED CLUBS: 2	29 CLUBS OF 55 ADDED 1 OR MORE NEW MEMBERS	<u>GENDER DISTRIBUTION</u>	
<u>DROPPED MEMBERS</u>		MALE	706 (59.78%)
DECEASED	20	FEMALE	475 (40.22%)
CLUB CANCELLED	0	NON BINARY	0 (0.00%)
OTHER	128	PREFER NOT TO ANSWER	0 (0.00%)
TOTAL	148	TOTAL FAMILY UNIT MEMBERS 312	
CLICK HERE FOR CUMULATIVE MEMBERSHIP DATA		FAMILY MEMBERS PAYING HALF DUES 160	